



## MV Network

Turnkey supply of a synchronization system for the power generation station (7x1800kVA): step-up transformers, main MV substation in addition to a load sharing and shedding system by PLC, for one of the largest aluminium factories in the Middle East.

### Contractor

MATELEC, Lebanon

### Customer

SIDEM

### Location

Jounieh - Lebanon

### Type of contract

Turnkey

### Type of substation

Indoor

### Scope of works

Engineering and Design  
Supply  
Installation  
Testing and Commissioning



### Head Office

Ghorfine - Amchit - P.O.Box: 12 Jbeil - Lebanon  
Tel: (961) 9 620 920 - Fax: (961) 9 620 934 / 5  
E-mail: [matelec@matelecgroupp.com](mailto:matelec@matelecgroupp.com)  
[www.matelecgroupp.com](http://www.matelecgroupp.com)

# SIDEM Factory

## MV Network

### Supplied equipment

Automation complete system including PLC monitoring, generator synchronization, protection and load shedding and sharing with utility designed and manufactured by MATELEC based on equipment by OMRON/WOODWARD/SELCO

#### MV 24kV Switchgear

MATELEC, Lebanon

20 units

Metal enclosed switchgears with fixed SF6 circuit breakers (FB4 Merlin Gerin breakers)

#### Control Panel

MATELEC, Lebanon

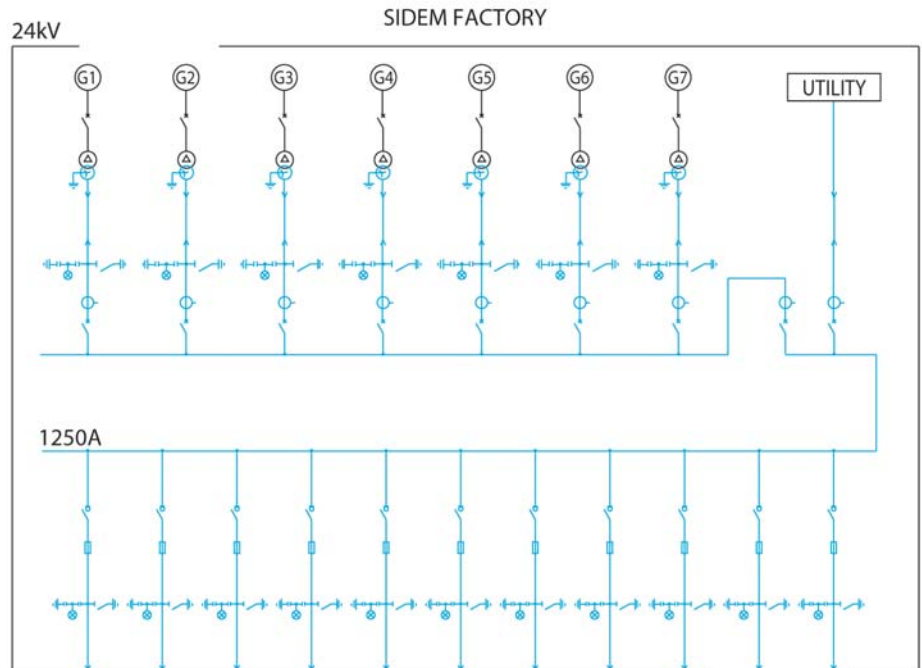
#### Auxiliaries

MATELEC, Lebanon

AC panels

7x2000kVA step-up auxiliary transformers

Capacitor banks



### Total contract value

3,440,000 FRF equivalent to 666,000 USD

### Contract signature

31/10/1992

### Taking over

01/08/1996 & 01/04/99 (extension)

### Involved manpower

(in man/hours)

Engineering : 3,000

Project management : 1,000

Installation : 8,000

Testing and Commissioning : 4,000

### Contact name

Mr. Adel Khoury

Telephone : (961) 9 220170